

Who was the real Jesus? Historians agree he really existed, but what was he like? Is there evidence that Jesus performed miracles? Did he rise from the dead? What claims did he make? Should they be taken

seriously? Join us as we explore these and other questions about one of the most influential people in human history.

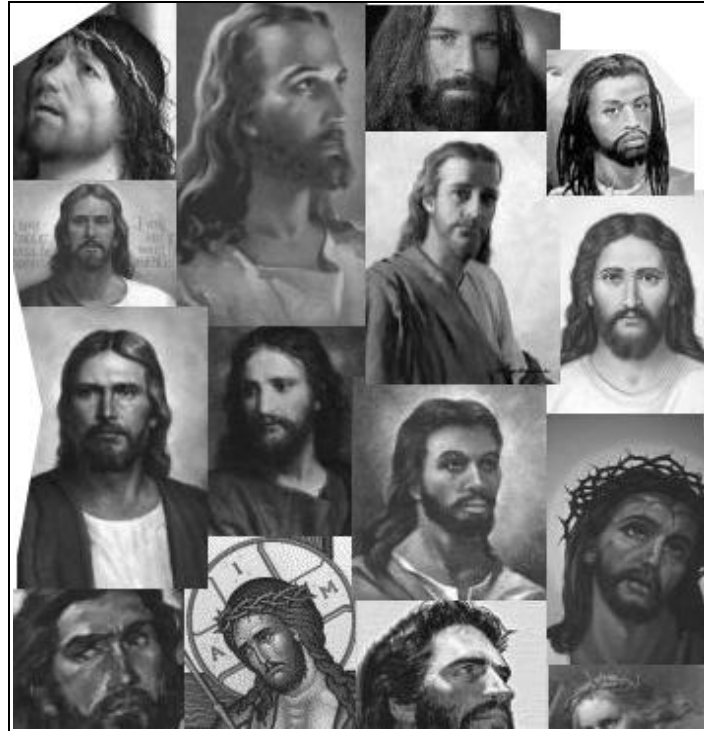
THE REAL JESUS

a 3-week class with Jenny Hale, Mike Sullivan, and Mary Beth Gladwell
on Xenos Main Campus: 1390 Community Park Drive

Wednesday nights, November 3 – 17, from 7 – 8:30 p.m
\$10/adults or \$5/students

register before 11/2 and then pay at the door:
www.xenos.org/classes/register
or call 823-6510 (choose option 4)

students who miss the registration deadline might be able to sign in at the door, *if* space is available, and will pay an additional \$2



Who was the real Jesus? Historians agree he really existed, but what was he like? Is there evidence that Jesus performed miracles? Did he rise from the dead? What claims did he make? Should they be taken

seriously? Join us as we explore these and other questions about one of the most influential people in human history.

THE REAL JESUS

a 3-week class with Jenny Hale, Mike Sullivan, and Mary Beth Gladwell
on Xenos Main Campus: 1390 Community Park Drive

Wednesday nights, November 3 – 17, from 7 – 8:30 p.m
\$10/adults or \$5/students

register before 11/2 and then pay at the door:
www.xenos.org/classes/register
or call 823-6510 (choose option 4)

students who miss the registration deadline might be able to sign in at the door, *if* space is available, and will pay an additional \$2